

Comprehensive Implementation Strategies

Implementing and Sustaining Evidence- Based Practice Use with Success

Amy Drahota, Ph.D.

Dept. of Psychology, San Diego State University
Child & Adolescent Services Research Center

Many Thanks

- K01 Mentors
 - ▣ Gregory Aarons
 - ▣ Aubyn Stahmer
 - Postdoctoral Fellow
 - ▣ Jonathan Martinez
 - Research Assistants
 - ▣ Rosemary Meza
 - ▣ Brigitte Brikho
 - AMI Collaborative
 - Research Interns
 - ▣ Emily Spurgeon
 - ▣ Alex Smith
 - ▣ Kelsey Palmer
 - ▣ Anna Mihai
 - Funding:
 - ▣ NIMH K01 MH093477
- 
- The logo for the National Institute of Mental Health (NIMH) is displayed. It features the letters 'NIH' in a bold, white, sans-serif font inside a dark grey arrow-shaped box pointing to the right. To the right of this box, the words 'National Institute of Mental Health' are written in a smaller, grey, sans-serif font, stacked in two lines.

- No conflict of interest

Agenda



- Implementation process and outcomes
- Barriers to implementation
- Brief overview of comprehensive implementation strategies
- ACT SMART Toolkit
- Preliminary feasibility, acceptability, utility data

Show of Hands



- Researchers
- Policy Makers
- Agency Leader
- Community Stakeholders

What is Implementation?

- Implementation
 - ▣ The process of putting to use or integrating evidence-based practices within a specific setting (National Institutes of Health, 2011)
- Applied outcomes of implementation (Proctor et al., 2009; Proctor et al., 2011)
 - ▣ Intent to use or actual use when indicated
 - ▣ Fidelity to practice
 - ▣ Provider and consumer satisfaction
 - ▣ Improved organizational and service system outcomes
 - ▣ Changes in important patient outcomes

Treatment Implementation



Treatment Implementation



Barriers to Implementation

- Implementation barriers in autism community organizations (Drahota et al., 2015)
 - ▣ No existing systematic implementation process fits the autism care setting
 - ▣ Lack of structure and consistency with implementation efforts
 - ▣ Agency leaders are uncertain about what specific implementation strategies would be helpful
 - ▣ Organizational and provider characteristics impact implementation
 - ▣ Research-based treatment characteristics impact implementation

“Agency-wide we’ve tried implementing [EBP], and that has been tough and there’s been a lot of resistance. Umm, I think that people didn’t feel that the resources were available at the time, and the value.”

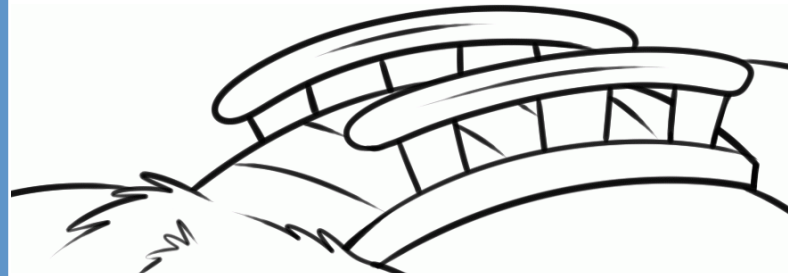
more quickly.”

Facilitating Implementation

□ Implementation Strategies

- “Methods or techniques used to enhance the adoption, implementation, and sustainability of a clinical program or practice” (Proctor et al., 2013)

Evidence-Based
Practice



Implementation
Strategies

Integrate EBP into
Organizations

- Knowledge and use when appropriate
- Fidelity
- Satisfaction
- Improved patient outcomes
- Improved organizational outcomes

Models, Theories, and Frameworks

- Tabak found 61 implementation models, theories, and frameworks (Tabak et al., 2012)
- Critiques of current D&I models
 - ▣ Mostly are theoretical models
 - Few studies have conducted applied research to assess the efficacy and effectiveness of these models
 - ▣ Limited agreement about implementation “success”
 - ▣ Limited study of predictors of implementation outcomes
 - ▣ Few comparative effectiveness studies of implementation strategies

Implementation Strategies

- Of the few studies investigating the application of implementation models, key elements have emerged
 - ▣ Using distinct phases to guide implementation
 - ▣ Involving direct service providers and community members as collaborative partners to provide input on the uptake of EBPs
 - ▣ Providing comprehensive training with ongoing support prior to and during the early uptake of EBPs

Implementation Strategies

- RE-AIM (Glasgow, 2000)
- Getting to Outcomes (Chinman, Imm & Wandersman, 2004)
- Arc Organizational and Community Intervention Strategy (Glisson & Schoenwald, 2005)
- California Evidence-Based Clearinghouse (Walsh, Rolls Reutz, & Williams, 2014)
- ACT SMART Toolkit (Drahota, Meza & Martinez, 2014)
- PCORI Dissemination and Implementation Framework and Toolkit (Esposito et al., 2015)



ACT SMART

Autism Community Toolkit: Systems to Measure
and Adopt Research-Based Treatments

Drahota, A., Meza, R., & Martinez, J. I. *The Autism-Community Toolkit: Systems to Measure and Adopt Research-Based Treatments*. 2014.

www.actsmarttoolkit.com

Overview of ACT SMART Toolkit

□ ACT SMART Toolkit

- Developed for community-based organizations (CBOs) providing services to individuals with autism spectrum disorder (ASD)
- Comprehensive, systematic and flexible implementation strategy
- Research-based
- Developed to assist ASD CBOs to efficiently and effectively implement new evidence-based practices

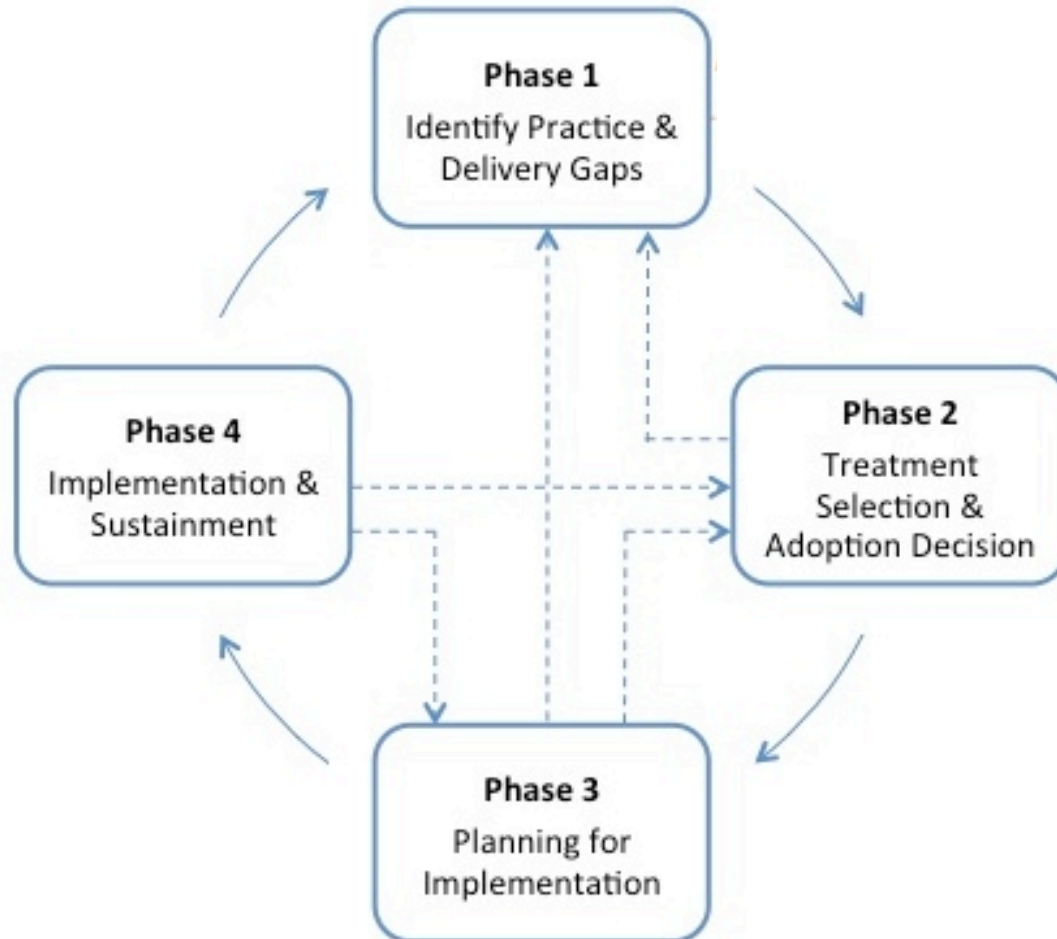


Overview of ACT SMART

- ACT SMART Toolkit
 - ▣ **Assists** with identifying training and service delivery gaps, and selecting research-based treatments to meet agency needs
 - ▣ **Facilitates** treatment adoption decisions
 - ▣ **Guides** the design of effective adaptation, training, and implementation strategies
 - ▣ **Supports** efforts that will sustain use of research-based treatments



Autism Model of Implementation



ACT SMART Phases and Activities

Phase	Step	Website Activity
Phase 1: Identify Practice & Delivery Gaps	Step 1: Agency assessment	Reading materials; forming implementation team if applicable, no formal activities
	Step 2: Receptivity to new treatment	
Phase 2: Treatment Selection & Adoption Decision	Step 1: Identify an appropriate treatment	Activity 1: Select treatment
	Step 2: Evaluate treatment and provider factors	Activity 1: Treatment fit
		Activity 2: Treatment feasibility
		Activity 3: Clinical value and research validity
		Activity 4: Training requirements
		Activity 5: Funding source checklist
	Activity 6: Benefit-cost estimator	
Step 3: Adoption decision	Activity 1: Adoption decision	

ACT SMART Phases and Activities

Phase	Step	Website Activity
Phase 3: Planning for Implementation & Sustainment	Step 1: Develop an adaptation plan	Activity 1: Gathering treatment materials
		Activity 2: Evaluating prospective adaptations to the treatment
		Activity 3: Treatment adaptation plan
	Step 2: Develop the training plan	Activity 1: Training plan
	Step 3: Develop the implementation and sustainment plan	Activity 1: Implementation and sustainment plan
Phase 4: Implementation & Sustainment	Step 1: Conduct adaptation plan	N/A
	Step 2: Conduct training plan	N/A
	Step 3: Conduct implementation	N/A
	Step 4: Evaluation	Activity 1: Evaluate progress

Agency Implementation Team

- Identify a specific person or team of people within the agency to complete the ACT SMART activities
 - Agency leader
 - Decision-maker with the agency
 - Has the opportunity and independence to decide the specific treatments to implement within your agency
 - Implementation Team
 - An Agency leader (see above)
 - Additional agency staff
 - Often teams of 2-6 work very well



ACT SMART Facilitation Meetings

- **Facilitation** is a consultation method that emphasizes change through **encouragement** and **action promotion** (Kitson et al., 1998)
 - ▣ Helps staff change work practices and behaviors successfully (Rycroft-Malone et al., 2002; Stetler et al., 2006)
 - ▣ Effectively improves the capacity of community-based agencies to plan, implement and evaluate new treatments (Hunter et al., 2009)
- **ACT SMART facilitation meetings**
 - ▣ Agency implementation team
 - ▣ Once monthly
 - ▣ Review progress, collaborate, problem-solve and plan





Welcome to ACT SMART

The ACT SMART Toolkit (Autism-Community Toolkit: Systems to Measure and Adopt Research-Based Treatments) is a comprehensive toolkit developed for agencies that provide services to individuals with autism spectrum disorder (ASD). ACT SMART assists agencies successfully implement new research-based treatments.

Specifically, ACT SMART:

- Assists in identifying training and service delivery gaps and selecting effective treatments to meet agency-wide needs.
- Facilitates treatment adoption decisions.
- Guides designing effective training and implementation strategies.
- Supports efforts that will sustain use of effective treatments.

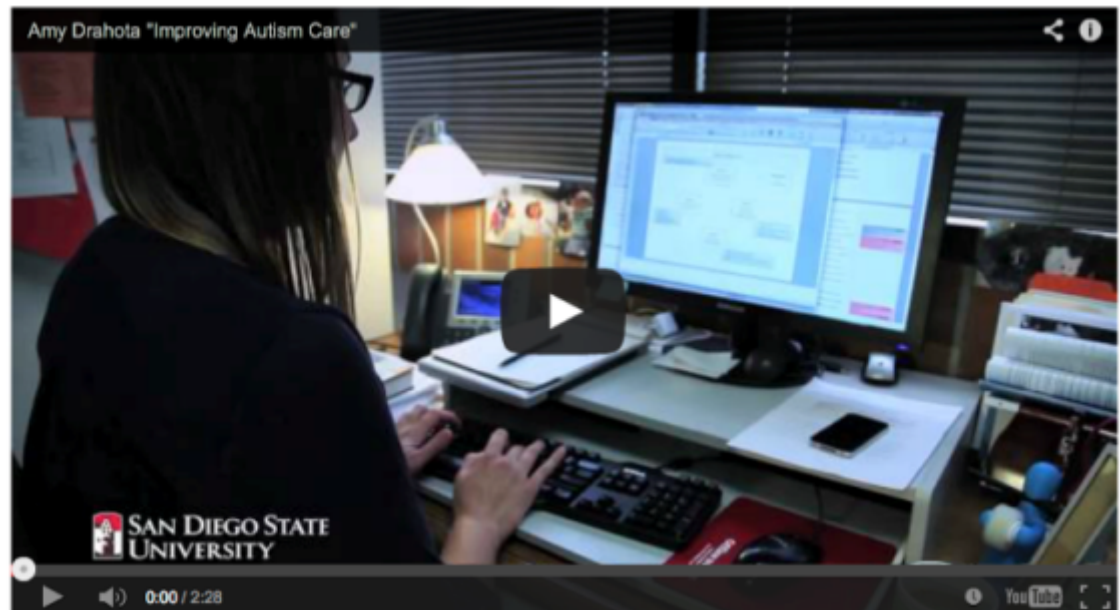
Sign In

Sign in

Contact us!

If you are interested in more information about the ACT SMART toolkit, please contact us by email at adrahota@mail.sdsu.edu or by phone at (858) 966-7703 extension 3266.

"Regard no practice as immutable. Change and be ready to change again. Accept no eternal verity. Experiment." – B. F. Skinner, Walden Two



ACT SMART: Preliminary Results

Cohort 1 (n = 4 agencies)	ACT SMART Toolkit / Activities	Website	Facilitation Meetings
Feasibility	<p><u>x = 4.5 (sd = .577)</u></p> <ul style="list-style-type: none"> • Easy • Not time intensive 	<ul style="list-style-type: none"> • Feasible • Organized • “Walks you through the steps” • Time 	<ul style="list-style-type: none"> • Flexible scheduling • Preparedness of facilitators • Time
Acceptability	<p><u>x = 4.5 (sd = 1.0)</u></p> <ul style="list-style-type: none"> • Satisfied • Respect for agency • Fit with agency needs 	<ul style="list-style-type: none"> • Satisfied • Logical 	<ul style="list-style-type: none"> • Well structured • Thorough, detailed meetings • Facilitators nice and friendly; responsive • Designed to meet agency needs • Scheduling
Utility	<p><u>x = 4.75 (sd = .5)</u></p> <ul style="list-style-type: none"> • Useful information 	<ul style="list-style-type: none"> • Extremely useful 	<ul style="list-style-type: none"> • In person helpful • Useful, content-rich • Collaborative

Thank you!

Feel free to contact us:

Amy Drahota: adrahota@mail.sdsu.edu

Jon Martinez: jonathan.martinez@mail.sdsu.edu

